

# SCS TRACER ENVIRONMENTAL BULLETIN

2nd Quarter 2011

An SCS Tracer Environmental Quarterly Publication

Volume XV Issue 2

## Santa Maria Valley YMCA Tri-For-Fun Triathlon

On Saturday April 30<sup>th</sup>, members from the San Marcos and Santa Maria offices met in Santa Maria for the 17<sup>th</sup> Annual YMCA Tri-For-Fun Triathlon. They participated in 3-person teams or individually by swimming ¼ mile, biking 12 or 18 miles through the countryside, and running a 5K in a park to the finish line. It was a beautiful day, although a little windy, and there was a great turn out. A couple of the SCS Tracer Teams even placed first in the category. The race results are summarized below:

- Jessica Garcia - Long - 2:21:52
- Ben Oakley - Long - 1:49:46
- Jennifer Green - Short - 1:46:50
- Santa Maria Team 1: Diana Buhler, Lucas Marsalek, Jessica Schoen - Long - 1:44:00 (1st Place, Team 20-29 category)
- Santa Maria Team 2: Dianna Beck, John Deacon, James Bray - Short - 1:33:33 (1st Place, Team 40-49 category)



### Key Service Area Contacts

*Air Monitoring:*

Paul Schafer (760) 744-9611 x111

*Environmental Construction:*

Dan Vossler (805) 346-6591 x 115

*Houston Operations:*

Michael Wood (281) 293-8494 x 59

*Permitting & Compliance:*

Greg Hauser (760) 744-9611 x106

*Petroleum Services:*

John Deacon (805) 346-6591 x101

*Risk Management & Safety:*

Jeanna Emmons (760) 744-9611 x102

*Santa Maria Operations:*

Ben Oakley (805) 346-6591 x102

*Tracer Sciences:*

Tom Rappolt (760) 744-9611 x107



Pat Hall and Jennifer Green



From Left: Jim Bray, John Deacon, Dianna Beck, Jessica Garcia, Jarrod Villanueva, Diana Buhler, Lucas Marsalek, Greg Hauser



Dianna Beck and Ben Oakley



Lucas Marsalek and Jessica Schoen



### Inside This Issue...

Tri-For-Fun Event.....	Front
Compliance Update .....	2
GHG Update .....	2
Welcome New Employee .....	2
Tri-For-Fun Continued .....	3
SCS Tracer Anniversaries .....	3
RETA Chapters .....	4

**SCS ENGINEERS**

(Continued on page 3)

## California Industrial Storm Water Compliance Update

The federal Clean Water Act prohibits the discharge of pollutants to waters of the United States from any point source unless the discharge is in compliance with a National Pollutant Discharge Elimination System (NPDES) permit. In California, applicable facilities can apply for coverage under the state's NPDES Industrial General Permit (IGP) for discharges of storm water. The IGP requires a facility to implement a Storm Water Pollution Prevention Plan (SWPPP) and a Monitoring Program as well as

submit an annual compliance report. The State of California is currently revising the IGP and has been conducting public workshops/hearings to solicit comments regarding the draft 2011 IGP. Potential new requirements include (but are not limited to) electronic filings, Numeric Action Levels (NALs), Numeric Effluent Limits (NELs), and testing for additional pollutants. Exceeding NALs would require corrective actions while repeatedly exceeding NALs could impose NELs and mandatory minimum penal-

ties. The timeline for adoption is not known at this time but it is anticipated that a revised draft 2011 IGP will be available for comment in Fall 2011. Once the new requirements are adopted, facilities will need to update their existing SWPPPs and Monitoring Programs to comply. For more information, please visit [http://www.waterboards.ca.gov/water\\_issues/programs/stormwater/industrial.shtml](http://www.waterboards.ca.gov/water_issues/programs/stormwater/industrial.shtml) or contact Mr. Greg Hauser at (760) 744-9611 x106. ✓

## Greenhouse Gas Regulatory Update

California's Greenhouse Gas (GHG) regulations have been put on hold by a state judge as a result of a recent lawsuit by several environmental groups. The environmental groups are concerned that the state's pending GHG cap-and-trade system could allow facilities to avoid cutting emissions by obtaining emission credits. The judge indicated that the state failed to review potential

alternatives to cap-and-trade adequately (e.g. a carbon tax). The State of California's GHG cap-and-trade program is scheduled for revision in October 2011 and implementation starting January 1, 2012. However, it is unclear how the judicial process will play out.

In a separate matter, the U.S. Environmental Protection Agency

(USEPA) has extended the deadline for applicable facilities to submit their 2010 GHG emissions. In general, the federal GHG reporting regulation applies to facilities that emit 25,000 metric tons or more of carbon dioxide (CO<sub>2</sub>) equivalent per year.

For more information, please contact Mr. Greg Hauser at (760) 744-9611 x106. ✓

## Welcome New SCS Tracer Employee

Diana Buhler has joined SCS Tracer Environmental as an Associate Professional. Her main area of concentration is regulatory permitting and compliance within the oil and gas industry in the Central California region. This work includes preparation of applications for regulatory permits such as air and land use permits and the development of plans and documents required by regulatory agencies such as Spill Prevention, Control and Countermeasures (SPCC) Plans and Hazardous Materials Business Plans.

Diana was born and raised in the Los Angeles area. She graduated from Cal Poly, San Luis Obispo in December with a Bachelor's degree in Environmental Management and Protection and a minor in City and Regional Planning. While attending Cal Poly, she worked as an Intern with the County of San Luis Obispo in the Planning and Building Department. As an intern there, she assisted in the preparation of Staff Reports and in the development review process for multiple projects. When she is not at work, Diana enjoys hiking, swimming, and cooking. ✓

**SCS Tracer  
Environmental Bulletin  
A Quarterly Newsletter by  
SCS Tracer Environmental**

**Office Director**

Thomas J. Rappolt

**Editor/Layout Design**

Lee Pyle / Diane Kerrin

**Authors**

SCS Engineers Staff Members

Do you have questions about an article appearing in this bulletin?  
Call us at (760) 744-9611.



*Above: Diana Buhler*



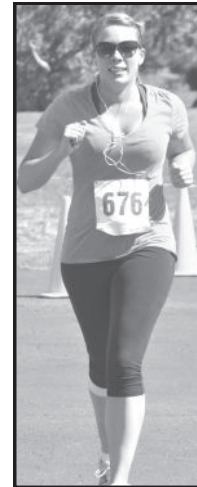
*Left: Jessica Schoen*



*Below: Ben Oakley*



*Lucas Marsalek*



*Dianna Beck*



*Jennifer Green*

# SCS TRACER Anniversaries

Jim Stirling	June 1988	23 years
Lee Pyle	May 1989	22 years
Matthew Peña	June 1990	21 years
Jake Tilley	July 1996	15 years
Paul Schafer	August 2000	11 years
Bob DeVillez	June 2003	8 years
John Deacon	May 2004	7 years
Diane Kerrin	June 2006	5 years
Marjorie Buyson	July 2006	5 years
Jennifer Green	June 2008	3 years
Michael Wood	June 2008	3 years
Dee Smith	June 2009	2 years
Lucas Marsalek	June 2010	1 year

# SCS Tracer Environmental

970 Los Vallecitos Boulevard, Suite 100  
San Marcos, CA 92069  
(760) 744-9611  
(760) 744-8616 FAX  
web page: [www.scsengineers.com](http://www.scsengineers.com)



The articles in SCS Tracer Environmental Bulletin are written by the staff of SCS Tracer Environmental. These articles are written for the benefit of our clients and other environmental professionals. SCS Tracer Environmental accepts no liability for any use which readers may make of the information contained herein.

© Copyright 2011, SCS Tracer Environmental. All rights reserved



## RETA LA Chapter 2

Meets the 3<sup>rd</sup> Wednesday  
of each month

For details contact:

Bret Bresee (213-746-8840) or  
Wayne Isaac (323-216-0015)



## RETA Inland Empire Chapter

Meets the 3<sup>rd</sup> Tuesday  
of each month

Next meeting is June 21<sup>st</sup>  
(5:30 - 8 p.m.)

Benshaw Motor Controllers

Location:

Castle and Cooke Cold Storage  
2356 Fleetwood Drive, Riverside, CA

For details contact Gary Griffis,  
President Inland Empire Chapter  
(951-369-0230)

